



HYUNDAI MARINE TECH

SHIP'S SPARE PARTS MANUFACTURING
SUPPLY & WORLDWIDE TRADING



Raising your competitiveness with **Your Reliable Partner!** We are being and staying for you!

Firstly, we would like to take this opportunity to express our sincere gratitude for the invaluable support and cooperation which our esteemed customers have extended to us. Basis on our manufacturing & trading experience of marine spare parts during last several ten years, we are very pleased to inform you that we have established Hyundai Marine Tech in 2010 who is a manufacturer, supplier and trader of various kinds of engine & equipment spare parts

Now, we are in a strong position of Main Engines & Aux' Engines spare parts, especially, for B&W and Japan made Engine, Pump, Purifier, Air compressor and Korean made ship equipment which is available by the best qualified replacement, O.E.M. and 2nd reconditioned.

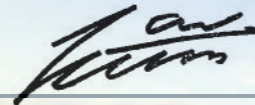
We have provided the above service through the accumulated know-how of our professional staff, marine engineers, and skilled technicians who are committed to the fulfillment of our clients' needs and requirements having an extensive experience in this area. We take pride in our company's achievements, as we provide "Total Quality Services" and "Total Quality Management", to our clients as both ship owners/managements and traders overseas.

We promise that we will contribute to its research and development for providing the most advanced products and services and these will contribute to your competitiveness adapting to the changing enterprise environment of the 21st century.

We sincerely appreciate for your deep concern to our company and product.

Very truly yours,

PRESIDENT **JI-WAN, KIM**




Company Name

HYUNDAI MARINE TECH CO., LTD.

Address

Head Office and Factory

For – Sales, Manufacturing, Purchasing, Supplying, Transportation, and Financing
15, Haeyang-ro 87beon-gil, Yeongdo-gu, Busan, S.Korea 49007
Tel : + 82 – 51 – 417 – 6706 ~ 7
Fax : + 82 – 51 – 417 – 6708 / 418 – 6708
E-mail : sales1@hdmarinetech.co.kr
Web site : http://www.hdmarinetech.co.kr

China Office

For - Sales Representative & Purchasing(China Equipment & Machinery)
Room 10-103, 29# Longhai Road, QETDZ, Qinhuangdao, P.R.C. Post Code :066004
Tel : + 86 – 335 – 750 – 2308
Fax : + 86 – 335 – 399 – 4885
E-mail : hmtsales2@hdmarinetech.co.kr

Japan Office

For – Sales and Purchasing
3-15, 2-chome, Kano-Cho, Chuo-Ku, Kobe, Japan
Tel : + 81 – 78 – 272 – 1773
Fax : + 81 – 78 – 272 – 1414
E-mail : sales@hdmarinetech.co.kr

Established

October 10, 2010

Capital

USD 175,000

Annual Turnover

USD 7,000,000

Employees

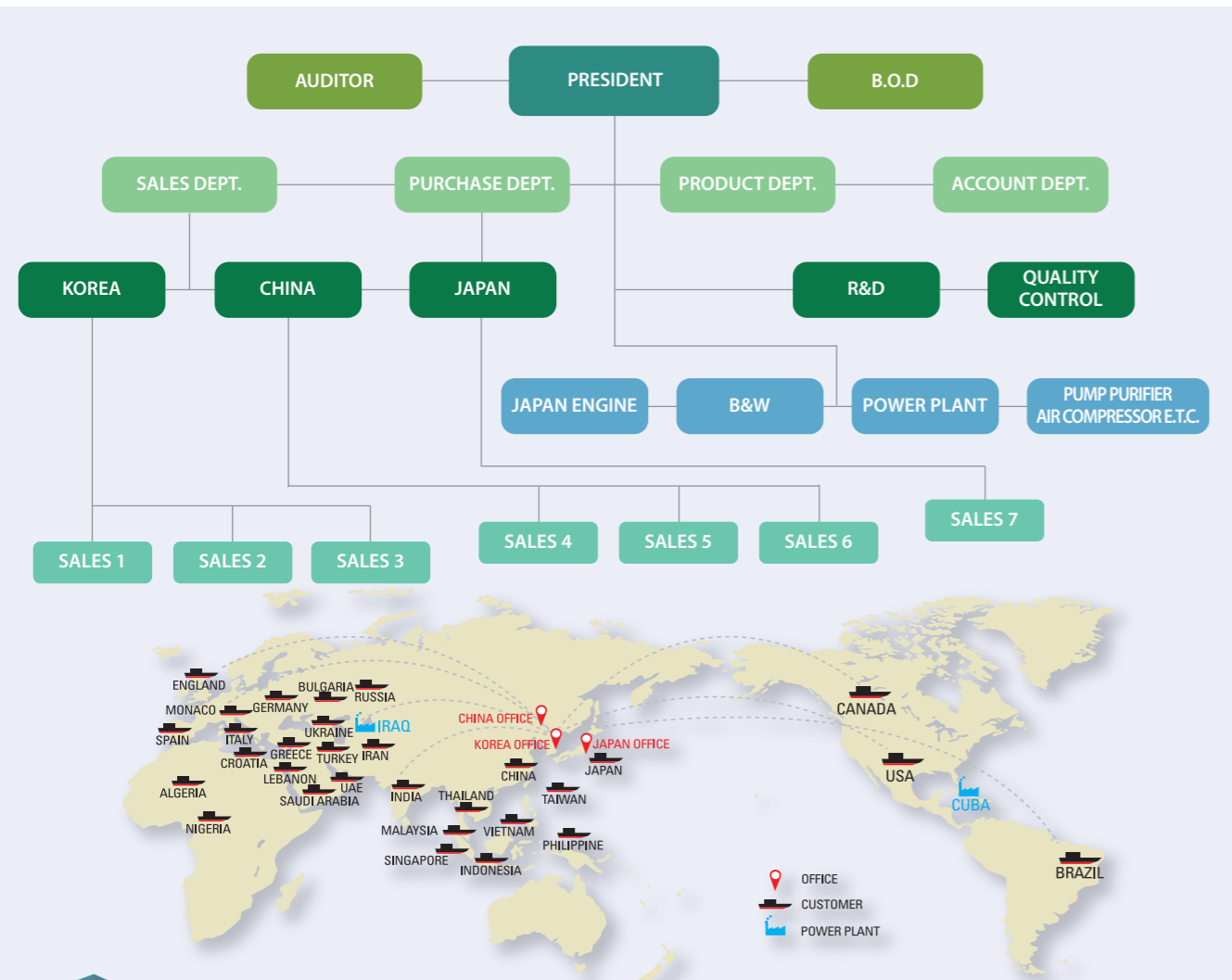
30 specialized people

Bank Reference

Shinhan Bank, Busan Bank

History

Jun, 2011 Established China office in Qingdao
Oct, 2011 Moved to Newly Expanded own Building
Jun, 2012 Started & Supplied for Power Plant Business
Jul, 2012 Moved China office to Qinhuangdao
Dec, 2012 Established Japan office in Kobe
Nov, 2013 Changed from Private to Corporation Company
Jun, 2014 Obtained Trade License 30693829, Korea Foreign Trade Association
Jan, 2015 Certified for ISO 9001 & 14001
Apr, 2015 Opened R&D Center and Certified by KOITA
Dec, 2015 Participated in Marintec China 2015 in Shanghai
Dec, 2016 Participated in Marintec Indonesia 2016 in Jakarta
Apr, 2017 Participated in Sea Asia 2017 in Singapore
Aug, 2017 Moved Head office and factory to New building area in Busan, S.Korea
Apr, 2018 Participated in APM 2018 in Singapore
Jul, 2018 China office moved & owned our own building in QHD
Jan, 2019 Win 5Million Export Tower Award ex KOTRA



CERTIFICATION





EQUIPMENT MAKER

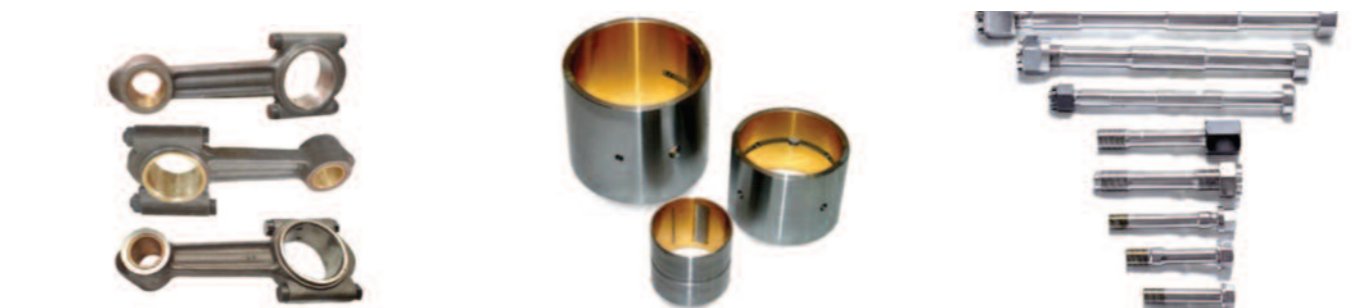
HYD. VALVE & CONTROL VALVE	BUYONG CO.
F.O & L.O FILTERS & STRAINER, HYD & SYSTEM	YOOWON IND. CO. LTD
AIR CON. PLANT, REFR, PROV. PLANT	CENTURY CORP. HI-PRESS.
METAL, BEARING	BEST METAL, DAEDONG METAL.
LINER, PISTON	SMECO
STEERING GEAR, DECK MACHINERY	TONG MYUNG HEAVY IND.
AIR COMPRESSOR	JONGHAP PNEUMATIC, BUMHAN.
AIR MOTOR/WINCH, DAVIT	SHIN MYUNG TECH CO.
TELE SYSTEM, TEMP & PRESSOR SENSOR	CMR KOREA, TRAFAG DAEYANG.
PROPELLER, RUBBER & RUDDER STOCK	SHIN IL METAL ENG CO.
VISCOSITY CONTROLLER, FLOW METER	DAEHO FLOW INSTRUMENTS CO.
HIGH VELOCITY P/V VALVE, MINERALIZER, GAS PRESS VENT	SE-WON IND CO.
BATTERY CHARGER, STARTER	SEUN ELEC. CO.
LIGHTING FIXTURE, MAIN SWITCH BOARD	DAEYANG ELECTRIC CO., AQUA SIGNAL
ANEMEOMETER, ENGINE TELGRAPH, PNEW, CONTROL SYS	DAEYANG INSTRUMENT CO.
GMDSS, WHISTEL, AUTO PILOT	SAMYANG RADIO CO.(SARACOM)
ELEC. COOKING RANGE, GALLERY EQUIPMENTS	SAMJOO IND CO.
AIR COOLER, HEAT EXCHANGER, F.W GENERATOR	DONG HWA ENTEC.
LIFE BOAT DAVIT & WINCH, E/R CRANE, PROV. CRANE	DONG WOO MACH & ENG., ORIENTAL PRECISION.
SHIP'S LADDER, HYD. V/V REMOTE CONTROL	SAMGONG CO.
ELEC. LEVEL TRANSMITTER, LEVEL SWITCH	PAN-ASIA PRECISION & ENG CO.
SMS, A/C MOTOR, FAN	O-YANG KONGOKI., HI-PRESS.
VALVE, STRAINER	DONG-A VALVE CO.
MARINE CRANE, DECK CRANE	DONGNAM ENTERPRISE CO., TAEKWANG CO.
SAFETY RELIEF V/V, TEMP/PNEU V/V	HALLA AUTOMATIC VALVE
CO2 SYSTEM, FIRE FIGHTING APPLIANCE	NK CO.
PUBIC ADDRESS SYS, AUTO EXCH. TELE	MARINE RADIO CO.
EXPANSION JOINT, AIR VENT HEAD	KWANG-SAN ENTERPRISE CO., SEWON IND.
OILY WATER SEPARATOR, LIFE RAFT	HAN YONG ENG CO., GEORIM ENGINEERING
LEVEL SWITCH/GAUGE, LEVEL TRANSMITTER	HANLA LEVEL CO.
ELEVATOR	HYUNDAI ELEVATOR CO.
LEVEL GAUGE, EDUCTOR	KI WON IND
BUTTERFLY VALVE	KEYSTONE VALVE(KOREA), HANYANG VALVE.
W.O INCINERATOR, AUX. BLOWER	HYUNDAI MARINE MACH. CO.
SEWAGE TREATMENT PLANT	JONGHAP MACH. CO.
WINDOW & SIDE SCUTTLE	JUNG GONG IND. CO.
MARINE BOILER, ECOMOMIZER	KANGRIM IND.
ACCO. LADDER, WINDOW WIPER	JUNG-A MARINE EUQIP. MFG
VALVE & SEAT	DSV, KSV

MAIN ENGINE

MAN B&W	L21/31, L23/30A, L28/32A(VF), L32/40, L40/45, 52/55A, S26MC, L/S35MC, L/S42MC, S46MC-C, L/S50MC-C, L/S60MC-C, L/S70MC-C, L/S80MC, K90MC, K98MC-C, S35ME-B, S40ME-B, S46ME-B, S50ME-C(B), LS60ME-C, L/S70ME-C, K/S80ME-C, S90ME-C, K98ME-C
MITSUBISHI	UEC37/88H, UEC45/115H, UEC45HA, UEC52HA, UEC37LA, UEC45LA, UEC52LA, UEC33LSII, UEC37LSII, UEC43LSII, UEC50LSII, UEC60LSII, UET39/65C, UET45/75C, UET45/8D
AKASAKA	AH25, AH27, AH28, AH30, AH33, AH36, AH-38, AH-40, DM-38A, DM-46, A31, A34, A37, A38, A41, A45, UEC37H-II, UEC37/38H, UEC45HA, UEC52HA, UEC37LA, UEC45LA, UEC52LA, UEC33LSII, UEC37LSII, UEC43LSII, UEC50LSII, UEC60LSII, DH38SS, DH51SS
HANSHIN	LU28, LU32, LU35, LU38, LU40, LU46, LU50, LU54, EL30, EL32, EL35, EL40, EL44, LF46, LF50, LF58, LH28
NIGATA	MG16X-A(C), MG20AX, MG25BX, MG28BX, MG31BX, M28AFTE, PA5L, M31EZ
WARTSILA(SULZER)	RTA52, RTA58, RTA62, RTA72, RTA84C(T), RT-FLEX48T, RT-FLEX50, RT-FLEX58T, RT-FLEX60C, RT-FLEX68, RT-FLEX82C, RT-FLEX84T, RT-FLEX96C

GENERATOR(AUX' ENGINE)

MAN B&W	T23LH-4E, S28LH-4E, L23/30, L23/30H, L23/30K, L28/32, L28/32H, L16/24, L21/31, L27/38, L32/40
YANMAR	S165, S185, M200, M220, T220, T240, T260, N18, N21, N165, N260, N280, N330, NY16LW, EY18(A)LW, EY22LW, EY26LW, KL, KFL, KDL, AL, CHL, LAAL, UAL, ZL, Z280
DAIHATSU	PKT(B)-16(A), PS-22, PS-26D(H), PL-24, PL-26, DS-22, DS-26, DL-16, DL-19, DL-20, DL-22, DL-24, DL-26, DL-28, DK-20, DK-26, DK-28, DK-30, DK-32, DC16, DC17
NIGATA	NSD-G, NSF-G, L16X-C



PURIFIER PARTS

MITSUBISHI & SAMGONG	SJ-700, SJ-2000, SJ-3000, SJ-4000, SJ-6000, SJ-10T/P, SJ-11T/P, SJ-15T/P, SJ-16T/P, SJ-20T/P, SJ-25T/P, SJ-30T/P, SJ-40T/P, SJ-60T/P, SJ-10F/G, SJ-15F/G, SJ-30F/G, SJ-40F/G, SJ-80F/G, SJ-100F/G
ALFA -LAVAL	MOPX 205/207/209/306/310, FOPX 605/609/610/611/613/614, LOPX705/707/709/710/ 713/714, MAPX 204/207/309, S820, S830, S821, S831, S841, S835, S855, P100, P150, P650, P615, P635
WESTFALIA	OSA-7-20-35, OSB-35, OSC-2-4-5-15-30, OSD-6-18-35, OTA7-14, OTB-2, DTC-2, VESB



AIR COMPRESSOR

YANMAR	SC-5N, SC-7N, SC-10N, SC-12.5N, SC-15N, SC-20N, SC-30N, SC-40N, SC-50N, SC-60N
TANABE	H-63, H-73, H-263, H-373, H-64, H-264, H-74, H-274, H-374, H-65A, H-264A, H-265A, H-275A, H-277A
MATSUBARA	MS-54A, MS-64A, MS-70, MS-75A, MS-85, MS-92A, MS-108, MS-111, MS-114A
HATLAPA	L90, L140, L160, L190, L220, K270, V105, V150, V200, V250, V375, W30, W40, W55, W80, W110, W140, W220, W280, W330, W420
SPERRE	HL2/90, HL2/105, HL2/120, HL2/140, HV1/85, HV1/120, HV1/156, HV2/200, HV2/219, HV2/220, HV2/240, HV2/270



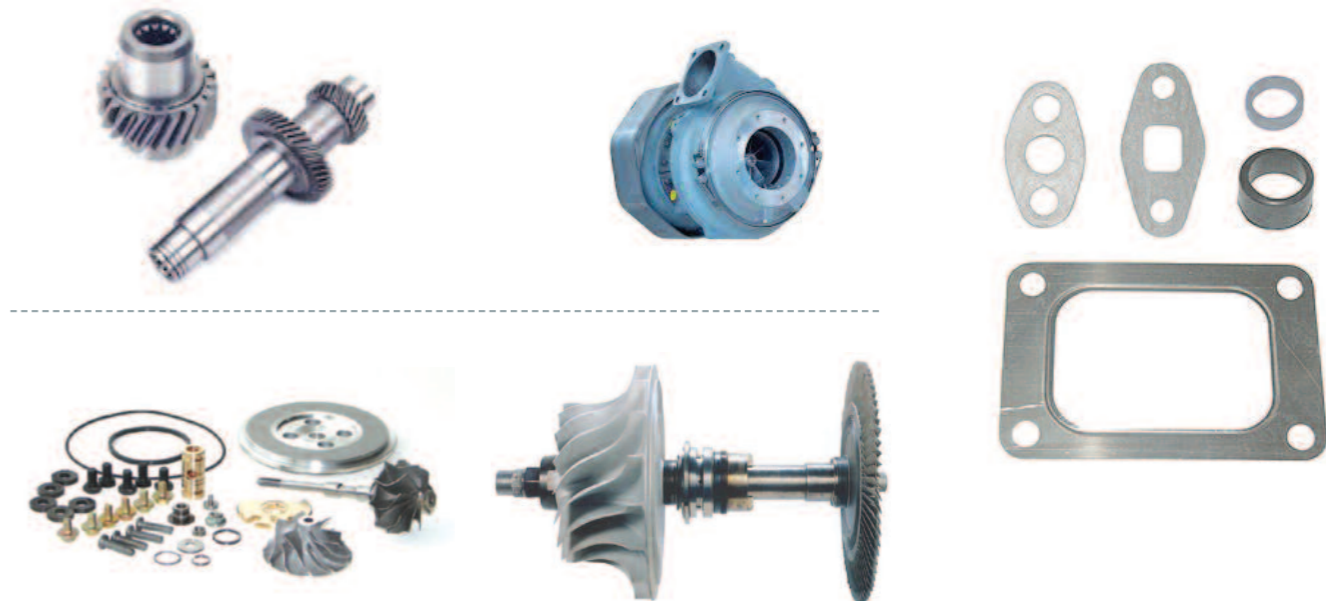
PUMP PARTS

HEISHIN	CY, HK/HSK, HP, HSY/HLY, PSY/PK, PV, PVN, RV, RVD, UHY, VC, VDK, VK/VSK, WY
NANIWA	FEV-D/E, 2FDDV, ALGT, ALGT-B, EB4H, FB2V, FBWV, FDDV, FE2V, FEWV/-D, SHR
ISHII	2CMA, 2CMH, 2VPSG, CMHTB, CDA, CSA, CSBII, ECSH, PBCSH, PCS, PCSH
TAIKO KIKAI	3MT, CR, EH, EMC, ESC, EVC, HC, HG, HHB, HNP, LD-NS, MST, MSV, NHG, NHGH, NLG, TMC, TMV, VC, VG, VS, VSE, VSN
TEIKOKU	2MSH-A, 2SL, 2VCS-A, BF-A, CSM, HC, MS, MSS, VCB, VCD, VCS, VDP, VH
SHINKO	AHJ, BT, EL, EVZ, GH, GHD, GHP, GHQ, GJ, GVC, GCD, GVP, GVX, HJ, RVD, RVP, SA, SHQ, SVA, SVB, SVC, SVD, SVS, VNC, VND, VND-HND, VPS
SHINSHIN	BCP, EHC, EHS, EHU, HG, NHGH, NLG/NHG, SVS, VG, VID



TURBO CHARGER

ABB	VTR160/161, VTR184, VTR200/201, VTR214, VTR250/251, VTR254, VTR304, VTR320/321, VTR354, VTR400/401
B&W	NR15, NR15R, NR20, NR26R, NA48, NA57
ISHII	MET42, MET450, MET56, MET53C





HYUNDAI MARINE TECH CO., LTD.
(주)현대마린테크

Head Office & Factory in Korea

15, Haeyang-ro 87beon-gil, Yeongdo-gu, Busan, S.Korea 49007

Tel : + 82 - 51 - 417 - 6706 ~ 7

Fax : + 82 - 51 - 417 - 6708 / 418 - 6708

Sales1 : sales1@hdmarinetech.co.kr

Sales2 : sales@hdmarinetech.co.kr

Sales3 : info@hdmarinetech.co.kr

Purchase : spares@hdmarinetech.co.kr

For - Sales Representative & Purchasing in China

Room 10-103, 29# Longhai Road, QETDZ, Qinhuangdao, P.R.C.

Post Code : 066004

Tel : + 86 - 335 - 750 - 2308

Fax : + 86 - 335 - 399 - 4885

Sales4 : hmtsales2@hdmarinetech.co.kr

Sales5 : hmtsales3@hdmarinetech.co.kr

Sales6 : hmtsales4@hdmarinetech.co.kr

Purchasing Office in Japan

3-15, 2-chome, Kano-Cho, Chuo-Ku, Kobe, Japan

Tel : + 81 - 78 - 272 - 1773

Fax : + 81 - 78 - 272 - 1414

